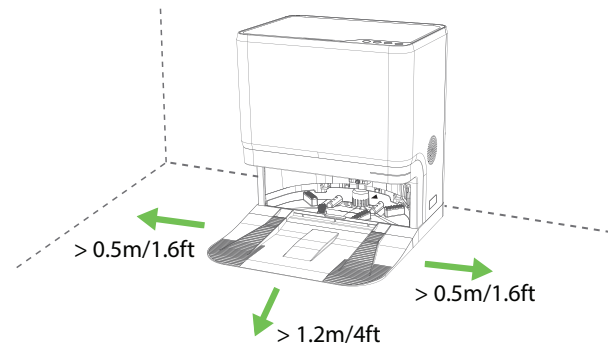
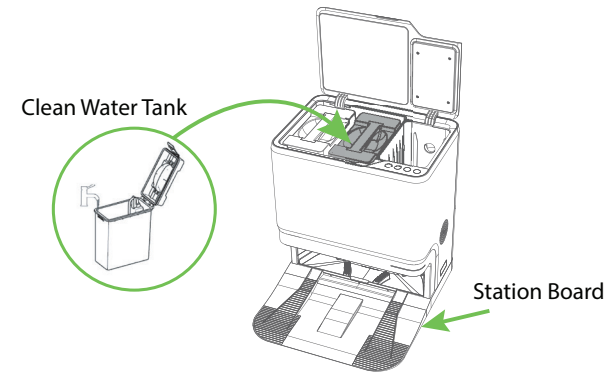


We recommend you give your robot a name

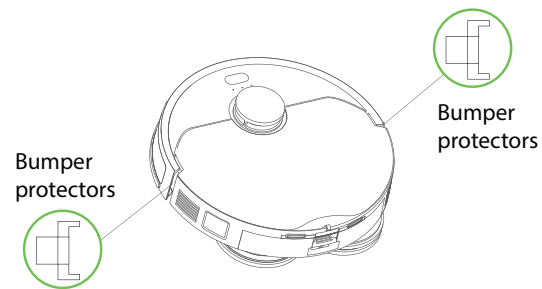
1) Connect Power Cord and place the Station in suitable location.



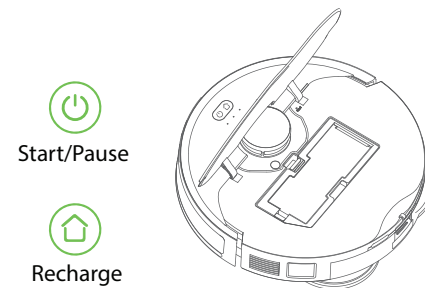
2) Install Station Board and add water to Clean Water Tank.



3) Remove protectors

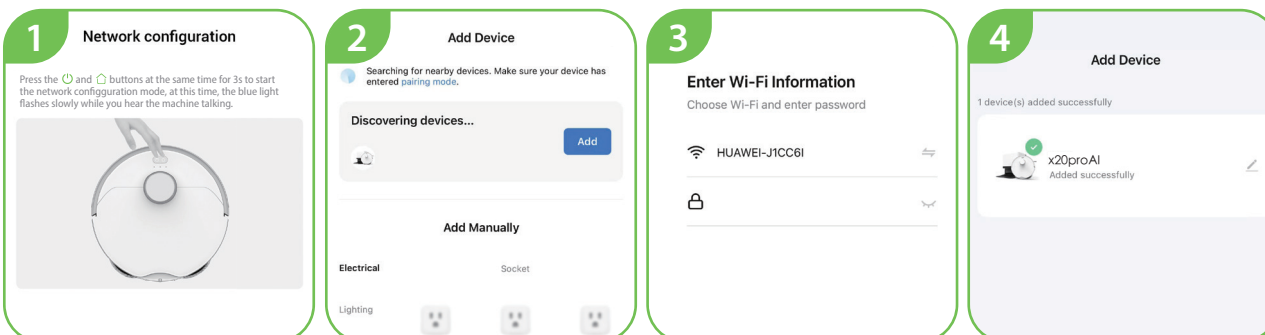


4) Power ON



5) Network Configuration

Download APP by scanning the QR code or searching "Smart Life" on the "App Store" or "Google Play".

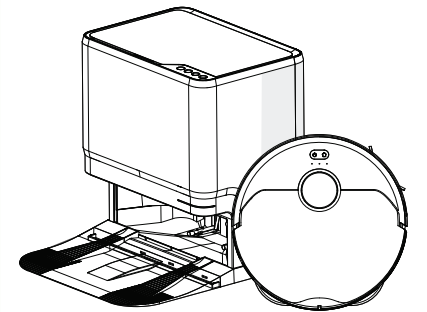


Manually connect with your robot

Scan the QR code to watch a step-by-step video guide on manually connecting your robot.

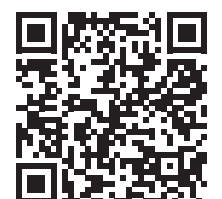


- ⚠ For optimal use your robot can map your house and divide rooms.
- ⚠ Open all internal doors and pick up loose items for your first mapping session.
- ⚠ Once it has finished your map will be available to view and edit in the app.
- ⚠ You can set cleaning preferences for each room and daily schedules in the app.
- ⚠ Please consult the manual for more detailed instructions.



Learn more

To learn more about the Glider Robot Vacuum, scan the QR code to visit our website with helpful guides and videos - or go to <https://homebotireland.ie/guides-and-videos/>



Recharge



Start/Stop Drying



Start/Pause



Self-Cleaning